



Red Hat Developer Tools 1

Using Eclipse 4.17

Installing Eclipse 4.17 and the first steps with the application

Red Hat Developer Tools 1 Using Eclipse 4.17

Installing Eclipse 4.17 and the first steps with the application

Eva-Lotte Gebhardt
egebhard@redhat.com

Olga Tikhomirova
otikhomi@redhat.com

Peter Macko

Kevin Owen

Yana Hontyk

Legal Notice

Copyright © 2020 Red Hat, Inc.

The text of and illustrations in this document are licensed by Red Hat under a Creative Commons Attribution–Share Alike 3.0 Unported license ("CC-BY-SA"). An explanation of CC-BY-SA is available at

<http://creativecommons.org/licenses/by-sa/3.0/>

. In accordance with CC-BY-SA, if you distribute this document or an adaptation of it, you must provide the URL for the original version.

Red Hat, as the licensor of this document, waives the right to enforce, and agrees not to assert, Section 4d of CC-BY-SA to the fullest extent permitted by applicable law.

Red Hat, Red Hat Enterprise Linux, the Shadowman logo, the Red Hat logo, JBoss, OpenShift, Fedora, the Infinity logo, and RHCE are trademarks of Red Hat, Inc., registered in the United States and other countries.

Linux[®] is the registered trademark of Linus Torvalds in the United States and other countries.

Java[®] is a registered trademark of Oracle and/or its affiliates.

XFS[®] is a trademark of Silicon Graphics International Corp. or its subsidiaries in the United States and/or other countries.

MySQL[®] is a registered trademark of MySQL AB in the United States, the European Union and other countries.

Node.js[®] is an official trademark of Joyent. Red Hat is not formally related to or endorsed by the official Joyent Node.js open source or commercial project.

The OpenStack[®] Word Mark and OpenStack logo are either registered trademarks/service marks or trademarks/service marks of the OpenStack Foundation, in the United States and other countries and are used with the OpenStack Foundation's permission. We are not affiliated with, endorsed or sponsored by the OpenStack Foundation, or the OpenStack community.

All other trademarks are the property of their respective owners.

Abstract

Information for users installing and starting to use Red Hat Developer Tools.

Table of Contents

CHAPTER 1. ECLIPSE 4.17	3
1.1. ENABLING ACCESS TO ECLIPSE RPMS ON RED HAT ENTERPRISE LINUX 7	3
Optional: Enabling the Red Hat Developer Tools debuginfo repositories	4
Additional resources	4
1.2. INSTALLING ECLIPSE	4
1.2.1. Installing additional Eclipse components	5
1.2.1.1. Installing additional Eclipse components using the Install New Software wizard	5
1.2.1.2. Installing additional Eclipse components using Eclipse Marketplace	5
1.2.1.2.1. Example: Installing C and C++ Development Tooling (CDT) using the Eclipse Marketplace Client	5
1.2.1.3. Installing additional Eclipse components using the command-line interface	6
1.2.1.3.1. Example: Installing Eclipse C and C++ Development Tools using the command-line interface	6
Additional resources	7
1.3. STARTING ECLIPSE	7
1.3.1. Starting Eclipse from the GUI	7
1.3.2. Starting Eclipse from the command-line interface	7
1.4. ECLIPSE COMPONENTS	7
Additional resources	8
1.5. CHANGES IN ECLIPSE 4.17	8
Additional resources	9
1.6. KNOWN ISSUES IN ECLIPSE 4.17	10

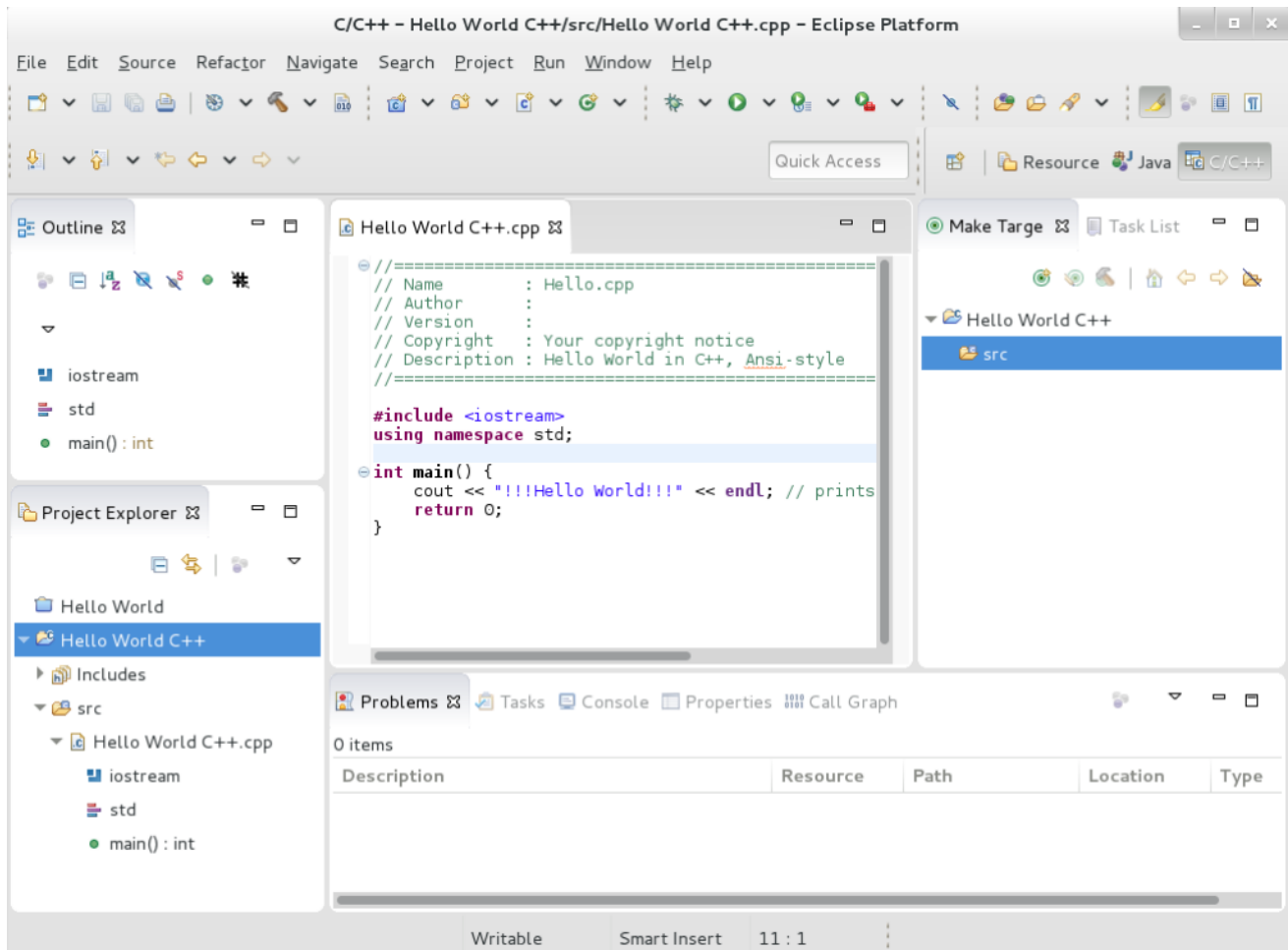
CHAPTER 1. ECLIPSE 4.17

Red Hat Developer Tools on Red Hat Enterprise Linux 7 is an offering for developers on the RHEL platform that includes Eclipse 4.17, which is based on the Eclipse Foundation's 2020-09 release train.

The Eclipse development environment provides tools for each phase of the development process. Eclipse 4.17 on RHEL 7 supports Java and Python development.

To learn more about Eclipse, see [the main Eclipse foundation page](#).

Sample Eclipse session



Eclipse provides a graphical development environment and is therefore an alternative to using the command-line interface.

For an overview of how to develop applications for Red Hat JBoss Middleware or for support of OpenShift Tools, see [Red Hat Developer Studio](#).

1.1. ENABLING ACCESS TO ECLIPSE RPMS ON RED HAT ENTERPRISE LINUX 7

Eclipse is part of the Red Hat Developer Tools content set for RHEL 7. To install Eclipse, enable the Red Hat Developer Tools, Red Hat Software Collections, and Optional repositories using the Red Hat Subscription Management utility.

Prerequisites

- The host must be registered and attached to a subscription. For more information on registering your system using Red Hat Subscription Management and associating it with subscriptions, see the [Red Hat Subscription Management](#) collection of guides.

Procedure

Choose the system *variant*, either **workstation** or **server**, to use in the following commands. Red Hat recommends to choose **server** for access to the widest range of development tools.

1. Enable the **rhel-7-variant-devtools-rpms** repository to access Red Hat Developer Tools:

```
# subscription-manager repos --enable rhel-7-variant-devtools-rpms
```

2. Enable the **rhel-variant-rhsc1-7-rpms** repository to access Red Hat Software Collections:

```
# subscription-manager repos --enable rhel-variant-rhsc1-7-rpms
```

3. Enable the **rhel-7-variant-optional-rpms** repository to access additional components:

```
# subscription-manager repos --enable rhel-7-variant-optional-rpms
```

Optional: Enabling the Red Hat Developer Tools debuginfo repositories

The Red Hat Developer Tools offering also provides **debuginfo** packages for all architecture-dependent RPMs in the repositories. These packages are useful for core-file analysis and for debugging Eclipse itself.

Procedure

- Enable the Red Hat Developer Tools **debuginfo** repositories and replace *variant* with the Red Hat Enterprise Linux system variant (**server** or **workstation**):

```
# subscription-manager repos --enable rhel-7-variant-devtools-debug-rpms
```

- Enable the Red Hat Software Collections debuginfo repository:

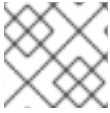
```
# subscription-manager repos --enable rhel-__variant__-rhsc1-7-debug-rpms
```

Additional resources

- For details on installing, understanding, and using the **debuginfo** packages, refer to [Debugging a Running Application](#).
- For more information on registering your system using Red Hat Subscription Management and associating it with subscriptions, see the [Red Hat Subscription Management](#) collection of guides.
- For detailed instructions on managing a subscription to Red Hat Software Collections, see the Red Hat Developer Toolset User Guide [Section 1.4. Getting Access to Red Hat Developer Toolset](#).

1.2. INSTALLING ECLIPSE

The following section describes how to install Eclipse.

**NOTE**

Eclipse is available only on the AMD64 and Intel 64 architecture.

Prerequisites

- On RHEL 7, the repositories must be enabled as per [Section 1.1, “Enabling access to Eclipse RPMs on Red Hat Enterprise Linux 7”](#).

Procedure

- On RHEL 7, run the following command:

```
# yum install rh-eclipse
```

1.2.1. Installing additional Eclipse components

Eclipse 4.17 on RHEL 7 supports Java and Python development. To install more components from the upstream repositories, for example to support **C** and **C++**, use the Install New Software wizard, Eclipse Marketplace Client or the command-line interface.

1.2.1.1. Installing additional Eclipse components using the Install New Software wizard**Procedure**

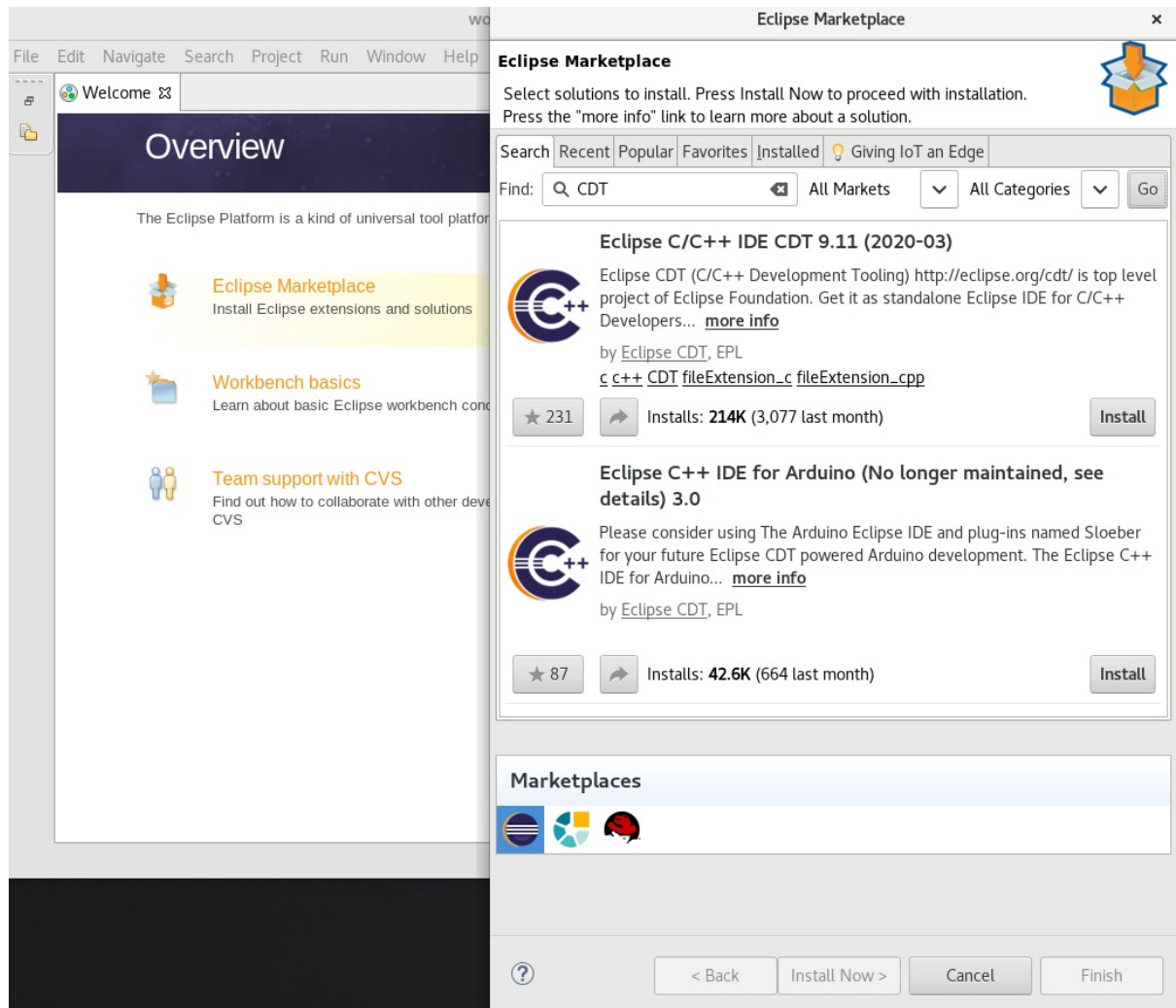
- To use the Install New Software wizard for the installation of additional components, in the main menu click **Help > Install New Software** and follow the instructions on the screen.

1.2.1.2. Installing additional Eclipse components using Eclipse Marketplace

To use the Marketplace Client for the installation of additional components, follow the instructions in [Section 1.2.1.2.1, “Example: Installing C and C++ Development Tooling \(CDT\) using the Eclipse Marketplace Client”](#).

1.2.1.2.1. Example: Installing C and C++ Development Tooling (CDT) using the Eclipse Marketplace Client**Procedure**

1. From the main menu, select **Help > Eclipse Marketplace**.
2. In Eclipse Marketplace, use the **Find** field to search for the wanted component, in this case CDT, and press **Go**.



3. Click the **Install** button to start the installation and follow the instructions on the screen.

1.2.1.3. Installing additional Eclipse components using the command-line interface

Red Hat recommends using Eclipse Marketplace or the Install New Software wizard to install additional components to Eclipse. However, it is possible to install components from the command line using the p2 director application.

To use the command-line interface for the installation of additional components, follow the instructions in [Section 1.2.1.3.1, "Example: Installing Eclipse C and C++ Development Tools using the command-line interface"](#).

1.2.1.3.1. Example: Installing Eclipse C and C++ Development Tools using the command-line interface

Prerequisites

- Eclipse is not running.

Procedure

1. In the command-line interface, run the following command:

```
$ scl enable rh-eclipse 'eclipse -noSplash -application org.eclipse.equinox.p2.director -repository https://download.eclipse.org/releases/2020-09 -i org.eclipse.cdt.feature.group'
```

2. Start Eclipse.

Eclipse C/C++ Development Tools is installed.



WARNING

Running the p2 director application as root causes significant problems for the RPM consistency. Never run the p2 director application as root.

Additional resources

- For a list of available components, see [Section 1.4, “Eclipse Components”](#).
- For further information on the p2 director application, see [Installing software using the p2 director application](#) in the online documentation or the built-in help system of Eclipse.

1.3. STARTING ECLIPSE

1.3.1. Starting Eclipse from the GUI

To start Eclipse from the GUI, complete the following steps:

- Click **Applications > Programming > Red Hat Eclipse**.

1.3.2. Starting Eclipse from the command-line interface

To start Eclipse from the command-line, type the following at a shell prompt:

- On RHEL 7:

```
$ scl enable rh-eclipse eclipse
```

While starting, Eclipse prompts you to select a *workspace* directory for your projects. You can use `~/workspace/`, the default option, or click **Browse** and select a custom directory. You can also select **Use this as the default and do not ask again** to prevent Eclipse from displaying this dialog box again. Click **OK** to confirm the selection and proceed with the start.

1.4. ECLIPSE COMPONENTS

The Eclipse development environment is provided as a set of RPM packages. The set contains the following Eclipse components:

Table 1.1. Eclipse Components on RHEL 7

Package	Description
rh-eclipse-eclipse-egit	EGit, a team provider for Eclipse, provides features and plug-ins for interaction with Git repositories.

Package	Description
rh-eclipse-eclipse-emf	The Eclipse Modeling Framework (EMF) enables you to build applications based on a structured data model.
rh-eclipse-eclipse-gef	The Graphical Editing Framework (GEF) enables you to create a rich graphical editor from an existing application model.
rh-eclipse-eclipse-jdt	The Eclipse Java development tools (JDT) plug-in.
rh-eclipse-eclipse-jgit	JGit, a Java implementation of the Git revision control system.
rh-eclipse-eclipse-mpc	The Eclipse Marketplace Client.
rh-eclipse-eclipse-pde	The Plugin Development Environment for developing Eclipse plug-ins.
rh-eclipse-eclipse-pydev	A full-featured Python IDE for Eclipse.
rh-eclipse-eclipse-subclipse	Subclipse, a team provider for Eclipse allows you to interact with Subversion repositories.
rh-eclipse-eclipse-webtools	The Eclipse Webtools plug-ins.

Additional resources

A detailed description of Eclipse and all its features is beyond the scope of this document. For more information, see the following resources.

Installed documentation

- Eclipse includes a built-in help system that provides extensive documentation for each integrated feature and tool. It is accessible from Eclipse's main menu: **Help > Help Contents**.

Other resources

- For a list of selected features and improvements in the latest version of the Eclipse development environment, see [Section 1.5, "Changes in Eclipse 4.17"](#).

1.5. CHANGES IN ECLIPSE 4.17

Eclipse 4.17 ships with Red Hat Developer Tools and plug-ins from the 2020-09 release train that provide a number of bug fixes and feature enhancements.

This section lists notable new features and compatibility changes in this release.

Significant package updates on RHEL 7

eclipse 4.16 → 4.17

Eclipse IDE and JDT/PDE plug-ins have been updated to version 4.17. For a more complete list of changes, see the [Eclipse 4.17 – New and Noteworthy](#) page. Notable enhancements include:

- The font used for tree and table views can now be customized with a font preference.
- Previous Edit Location navigation is now expanded to remember multiple edit locations.
- The GTK light theme is now improved.
- The interpretation of ASCII control characters in the Console View has been extended to now recognize null bytes.
- Content Assist in Java Editor now fully supports both substring and subword matches for types.
- An optimization tab has been added to JDT. It gathers cleanups that improve the time performance: the existing lazy operator cleanup and the regex precompiler cleanup.

eclipse-pydev 7.6.0 → 8.0.0

The PyDev plug-in has been updated to version 8.0.0, which most notably introduces improvements in type inference and fixed debugging issues. For details, see the upstream [PyDev 8.0.0 release notes](#).

eclipse-egit/jgit 5.8.0 → 5.9.0

The Git integration plug-ins have been updated to version 5.9.0. For details, see the upstream [EGit 5.9.0 release notes](#) and [JGit 5.9.0 release notes](#).

The most notable change is the possibility to have a push confirmation dialog shown each time you commit and push.

eclipse-webtools 3.18.0 → 3.19.0

The Web Tools Platform has been updated to version 3.19.0. For details, see the upstream [Web Tools Platform 3.19 – New and Noteworthy](#) pages.

eclipse-m2e 1.16.0 → 1.16.2

The Maven integration plug-in has been updated to version 1.16.2.

Deprecated functionality on RHEL 7

C/C++ Development Tooling (CDT)

CDT is no longer shipped as part of Eclipse. It can be installed additionally from the Install New Software wizard or Eclipse Marketplace.

Eclipse no longer enables the Red Hat Developer Toolset software collection automatically. To enable the collection, start Eclipse from the command line using the following command:

```
$ scl enable rh-eclipse devtoolset-10 eclipse
```

Linux Tools plug-ins

The Linux Tools plug-ins are no longer shipped as part of Eclipse. They can be installed additionally from the Install New Software wizard. The Eclipse Marketplace allows the installation of Linux Profiling Tools, Eclipse Vagrant Tooling, Eclipse Docker Tooling and RPM integration.

Additional resources

For details on how to use the new features, see Eclipse [Installed documentation](#).

1.6. KNOWN ISSUES IN ECLIPSE 4.17

This section details the known issues in Eclipse 4.17.

Known issues on RHEL 7

Initializing Eclipse Error Reporting System error

This error occurs when running a workspace created in an older version of Eclipse.

To work around this problem, start Eclipse with the **-clean** option to clear its dependency resolution cache:

```
$ scl enable rh-eclipse "eclipse -clean"
```

Eclipse will start without this error message.

NullPointerExceptions

NullPointerExceptions can occur when you install a plug-in from a third-party update site. In that case, Eclipse fails to start with a **NullPointerException** in the workspace log file.

To work around this problem, restart Eclipse with the **-clean** option to clear its dependency resolution cache:

On RHEL 7:

```
$ scl enable rh-eclipse "eclipse -clean"
```

Eclipse will start normally.

The **rh-eclipse-tycho** package conflicts with the same package from earlier collections

For example: **rh-eclipse48-tycho**:

As a result, the installation of the **rh-eclipse-tycho** package may fail when the **rh-eclipse48-tycho** package is already installed.

You only need Tycho if you want to build or rebuild Eclipse or its plug-ins need Tycho. If needed, uninstall the **rh-eclipse48-tycho** package before installing the **rh-eclipse-tycho** package using this command:

```
$ yum remove rh-eclipse48-tycho
```

The installation of the **rh-eclipse-tycho** package will now succeed.

PyDev users may experience issues with the pip integration

Modules that are pre-installed by the system or RHSCS Python cannot be uninstalled by pip. Attempts to do so will result in **permission denied** errors.

PyDev shortcut to manage Python modules does not work

Using the **Ctrl+2** shortcut and selecting **pip** does not function properly. Attempts to use this shortcut therefore result in an **SWTException** in the workspace log.

Users can continue to manage their Python modules using the **PyDev > Interpreters** preference.

Incompatibilities between Eclipse Subclipse and base RHEL Subversion

Working copies of Subversion repositories created with Eclipse Subclipse are incompatible with the base RHEL version of Subversion. Using the **svn** command on such working copies may result in the following error:

```
$ svn up
svn: E155021: This client is too old to work with the working copy
```

To work around this problem, use the pure Java implementation of Subversion used by Eclipse Subclipse on the command line:

```
# yum install rh-eclipse-svnkit-cli # Command line support for SVNKit
```

Now, use the **jsvn** command anywhere you would normally use the **svn** command:

```
$ jsvn up
Updating '.':
At revision 16476.
```